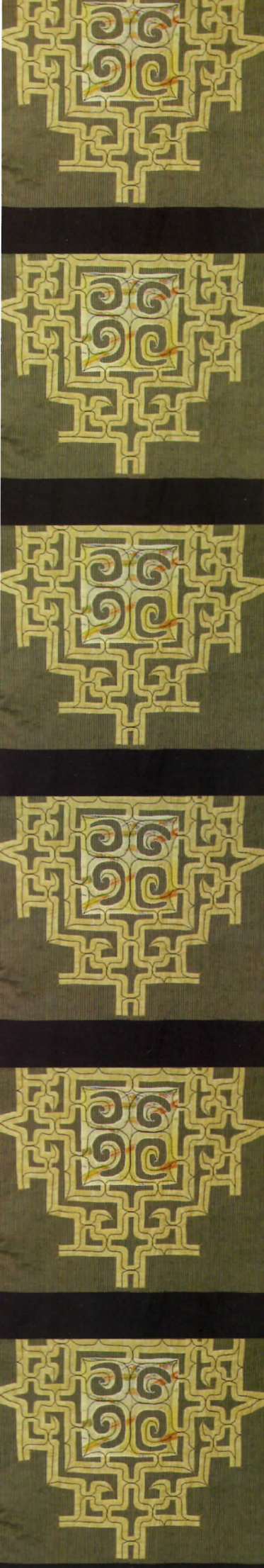


HOKKAIDO SHIRAOI



Traditional SHIRAOI

北海道
白老町

Village of The Ainu people culture tradition

Poroto Kotan

The knowledge and skills of a northern indigenous people, which have been unwaveringly handed down to the present day



The area in the vicinity of Lake Poroto is a major base of ethnic culture and outdoor activities. It includes an open-air museum that shows the traditional life and culture of the Ainu, and the "Shiraoi Furusato 2000 Nen No Mori" (Poroto Forest), a campground filled with greenery. Visitors can enjoy themselves throughout the year with skating and wakasagi (pond smelt) fishing on the lake during winter.



■The Ainu Museum

This is a museum specializing in the Ainu in the form of a *cise* (a traditional Ainu house), where their daily lifestyle and culture are introduced. It also serves as the base of investigations and research on Ainu culture, as well as cultural exchanges.



Address: 3-4, Wakakusa-cho 2 chome, Shiraoi Town

Tel: (0144)82-3914

URL: <http://www.ainu-museum.or.jp>



Collections at the Museum

The museum has on display an abundance of tools and implements that the Ainu used in their daily lives: hunting tools, ritual artifacts, treasures and more. Various dioramas display their lifestyle shown, using dioramas. Results of investigation and research thus far have also been published as records of folk traditions and research reports.



■Ancient Ritual Dance of the Ainu

The ancient dances, such as *Iomante rimse* (bear-spirit sending back dance) and *Sarurun cikap rimse* (crane dance), were designated as important intangible cultural properties by the national government.

They are demonstrated together with the performance of *mukkuri*, a musical instrument, and other activities.



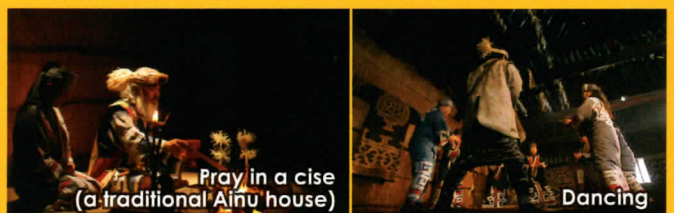
■Attus weaving

Attus weaving is a traditional Ainu craft—attus robes are carefully woven from fiber which is obtained from the bark of trees such as Ohyo elm trees and Japanese lindens, using their own unique technique. Demonstrations are available.

Special Program Night of Poroto Kotan

A special fee-based program designed to introduce and allow visitors to experience the fantastic atmosphere of traditional prayer, song dance and food culture handed down among the Ainu community in Shiraoi. This program of tightly combined performances is available only at the Ainu Museum.

Poroto Kotan - a space isolated from the bustle of the outside world in a unique environment of tranquility, water and greenery - is a healing oasis that offers the perfect way to balance out today's busy lifestyles.



Pray in a cise
(a traditional Ainu house)

Dancing



Master of History

Sendai Clan Shiraoui Moto Jinya Museum

The Sendai Clan Shiraoui Moto Jinya was the core facility for clan soldiers stationed for 12 years to protect the northern region against the possible southward advance by Russia under the command of the Edo shogunate in 1856. The largest former Moto Jinya in Hokkaido is also open to the public, designated as a historic park by the national government. Together with the history museum displaying the historical materials of Jinya, it has continued to vividly display the region's history.



The enthusiasm of the Sendai Clan soldiers speaks quietly

Remembrance of the shogunate's turbulent end

Address: 681, Jinya-machi, Shiraoui Town
Tel: (0144)85-2666
URL: <http://www.town.shiraoui.hokkaido.jp/ka/jinya/>

Collections at the Museum

This museum houses invaluable arms and armor, such as matchlocks introduced from Portugal and long spears popular during the Sengoku (Warring States) period. The cast-iron cannons that were used from the early days of the Edo period are impressive. It is said that there were 300 field artillery units equipped with wheels. Pictures, map and a variety of high-definition video programs related to Ezo or the northern region also cannot be missed.



EVENT

Spring

SHIRAUI GYUNIKU MATSURI
 (Shiraoui Beef Festival)
 The weekend second in June



Summer

SHIRAUI MINATO MATSURI
 (Shiraoui Port Festival)
 The weekend the end of July



Winter

The pond smelt fishing removal of a ban
 January~Beginning of March



THE HIGHLIGHT

The flower of a cherry tree and the skunk cabbage blooms

The end of May~beginning of June



Cherry blossoms

Going up of the salmon

October~November



The salmon which goes up in a river



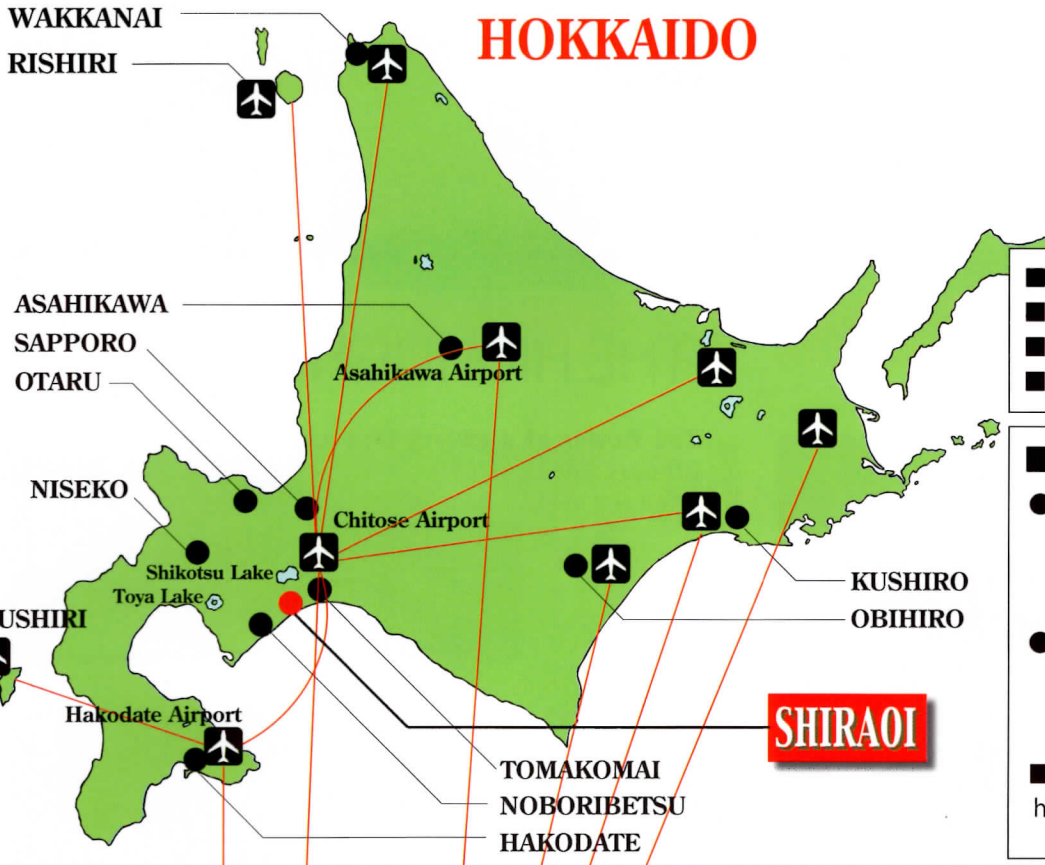
SHIRAUI BURGER



SHIRAUI BEEF



WAKKANAI RISHIRI **HOKKAIDO**



■ Spring	April~June
■ Summer	July~August
■ Autumn	September~October
■ Winter	November~March

■ Airline	
● Tokyo ↔ Sapporo (New Chitose airport)	Time 1 hour and 35 minutes Frequency 52 flights a day
● Osaka ↔ Sapporo (New Chitose airport)	Time 2 hour and 10 minutes Frequency 8 flights a day
■ Specifically, please refer to this place http://en.visit-hokkaido.jp/access/accessToHokkaido/	

■ Quick Guide to car and JR (Japanese Railways) routes

- From Sapporo
Approx. 1 hr. by car (Do-oh Expressway)
Approx. 1 hr. by JR limited express
- From Chitose City (New Chitose Airport)
Approx. 40 min. by car (Do-oh Expressway)
Approx. 30 min. by JR limited express
- From Tomakomai City
Approx. 20 min. by car (Do-oh Expressway)
Approx. 15 min. by JR limited express
- From Hakodate City
Approx. 4 hr. by car (Do-oh Expressway)
Approx. 2.5 hr. by JR limited express

Sightseeing inquiries

Industrial and Economic Affairs Section, Shiraï Town Office 1-1, Omachi 1-chome, Shiraï-cho, Shiraï-gun, Hokkaido 059-0995 Tel:(0144)82-2121 Fax:(0144)82-4391 URL: http://www.town.shiraï.hokkaido.jp/	Shiraï Tourist Association 1-1, Higashimachi 2-chome, Shiraï-cho, Shiraï-gun, Hokkaido 059-0904 Tel:(0144)82-2216 Fax:(0144)82-4517 URL: http://www.shiraï.net/
---	--