

## Glover Garden: More Fun than Ever

Glover Garden is available for parties, weddings and a wide variety of other events. A wedding or party at these historic facilities in this prime location is sure to make a lasting impression.



### Multi-Purpose Use of Facilities (Private Hire)

**Days Available for Hire** Any days when the park is not open at night.

**Times Available for Use** 18:30–21:30

**Cost** ¥102,800

**Application Period** Applications are accepted up to one year in advance, counting from the start of the month. \*Nagasaki citizens may only book up to 6 months in advance.

**Application Procedure** A completed application form for permission to use Glover Garden should be submitted along with a written proposal no later than two weeks before the planned date of hire.



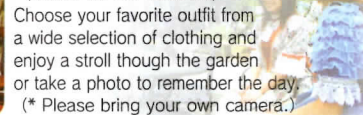
### Retro Photography Studio (former house of the President of the Nagasaki District Court)



Period clothing is available for rental to help you create the right mood.

(¥500 for 30 minutes)

Choose your favorite outfit from a wide selection of clothing and enjoy a stroll through the garden or take a photo to remember the day. (\* Please bring your own camera.)



### Jiyu-Tei Coffee Shop

(second floor of the former Jiyu-Tei restaurant)



This stylish coffee shop offers a splendid view of the port. We recommend the Dutch coffee, a drink conceived of by the Dutch who played such an important part in Nagasaki's history. Don't miss out on this rich, fragrant beverage, made with cold water drop by drop over 24 hours.



### Glover Garden Shop

(Nagasaki Traditional Performing Arts Museum exit)



Once you've finished your stroll, pick up the perfect memento of your visit at the exit (1st floor, Nagasaki Traditional Performing Arts Museum). You'll find on sale here a great variety of original merchandise including goods imported from Britain, a country with particularly strong ties to Nagasaki's past. From postcards to key holders and treats, this is the place to look for Glover Garden souvenirs.



Visitors in wheel chairs can also enjoy taking a stroll through the garden. We have worked to make the entire garden barrier-free, with wheelchair lifts and slopes, and multipurpose toilet facilities with wheelchair access. Don't hesitate to take advantage of the motorized wheelchairs we have available free of charge. The Garden has also set aside special parking for the disabled.

✿A four-leaf clover is illustrated on the cover. Try to find it. (Hint! Follow the cat's eyeshot line)

# GLOVER GARDEN GUIDE MAP

# GLOVER GARDEN



# GUIDE MAP



## Glover Garden

Opening hours: 8:00 to 18:00

(PLEASE NOTE: Entrance gate closes 20 minutes before closure of the park)  
That fluctuates with the seasons.

8-1 Minami-Yamatemachi, Nagasaki City, Nagasaki Prefecture, 850-0931, Japan

Phone: +81-95-822-8223; Fax: +81-95-823-3359

URL: <http://www.glover-garden.jp/>

# GLOVER GARDEN



# GLOVER GARDEN

# Welcome to

ABCDEFGHIJKLM

## Discover

Surprises and mysteries!  
Seek out wonders at Glover Garden.

# GLOVER GARDEN

### A Public Water Tap from the Meiji Era

The water service of Nagasaki city was founded in 1891 (Meiji 24). In those days, most tap water was supplied via public taps provided on the streets, with the city's water officer turning on the water in the mornings and turning it off in the evenings.



### B Border of foreign settlement

Keep an eye out for the many stone markers which originally marked the boundary of the foreign settlement, next to the No. 2 Gate Entrance, and Stock-Anchors used by Mitsubishi.



### C Takashima-style Cannon

This old Japan made cannon is said to be produced by a gunsmith Seizo Nogawa under the supervision of Nagasaki-born gun designer, artillery tactician Suuhan Takashima.



### D Gate of the Freemasons' Lodge (assembly place)

This was used as the gate pillar stone for the entrance of a residence owned by British family lived in Nagasaki. On this pillar stone, the mark of the Freemasons (stoneworker), a group with British origins, is carved.



### E Japan's Oldest Asphalt Road

Sloping down to the right from the statue of Tamaki Miura are the remains of a road. This is thought to be the oldest asphalt road in Japan, which was built by Thomas Glover's son Tomisaburo kuraba. It seems there was also once a tennis court nearby. The Glover and Ringer families are said to have enjoyed playing tennis on a court they had cut into the slope of Minami-Yamate.



### F Storehouse Cut Into a Natural Cliff

This storehouse is cut into a natural cliff located behind the Former Alt Residence. The interior of the storehouse is surprisingly spacious, with a breadth of 3m and a depth of 9m. The storehouse normally maintains a temperature of around 20°C, which in the hot climate of Nagasaki made it very luxurious possession. Wine was stored here, and it was likely guests were brought here to be entertained.



### G Statues of Tamaki Miura and Puccini

The opera Madame Butterfly set in Nagasaki, which is counted among one of the three great operas of the world. On the Glover Garden grounds, you'll find statues of the creator of that opera, Giacomo Puccini, and of Tamaki Miura, who became world-famous for her role as Madame Butterfly.



### I Ryoma Sakamoto in a secret room?

A windowless secret room is hidden in the ceiling in the hallway to the bedroom used by Glover's wife Tsuru. Glover backed groups looking to overthrow the Shogunate such as those in the Satsuma and Choshu Domains, breaking state prohibitions to smuggle Satsuma youth into Britain on his own ship and selling large quantities of weapons to Choshu. These revolutionaries surely must have come and gone from the Glover House, partaking in many secret talks.



### H The Mirror You Can't See Yourself In

The mysterious mirror in the former Glover House. The majority of people who stand in front of this mirror can't even see their faces. The mirror must have actually not been installed to show people, but rather illuminate the room.



### K The image of Guardian Lion-dog used for Kirin Beer Label

Glover started a beer company called the Japan Brewery Company. It is said that the charming stone guardian lion-dog sitting next to the greenhouse at the former Glover House was the model for the picture of the Kirin, used on the label. And maybe the Kirin's moustache was based on Glover's...



### L Dining Hall Gong Used When Ships Left Port

The gong used when the ferry to the Takashima mines left port was for some reason set up in the dining hall of the former Glover House. Of course, it was also used as a signal that dinner was ready.



### M 300-Year-Old Sago Palm

This sago palm is located in the garden of the Former Glover Residence. The lord of Satsuma Province is believed to have given this tree to Glover as thanks for Glover's efforts to aid the Satsuma Clan through shipbuilding and negotiation. The tree is believed to be 300 years old, making it one of the oldest sago palms in Japan.



## LEGEND

### Legend of Heart Stone

As the story goes, touching a heart-shaped paved stone will make your dreams of love come true, while good things will come if you find both stones. One of these stones is below the direction indicator in the garden at the former Glover House. And the other-- next to the rest house!



## GLOVER GARDEN



← Glover Skyroad

No. 2 Gate

Ticket counter

B

1

Wheelchair slope

C

Observation square

Historic fountain

F

6

7

Event square

2

Fountain of prayers

D

5

in front of Tamaki Miura

G

E

Rest house

Exit

10

After travelling to Nagasaki from distant Scotland, Thomas Blake Glover built a house on the hill in Minami-Yamate in 1863. Nagasaki then was vibrant with the energy of people looking toward a new dawn for Japan. Here were the merchants from across the seas, pursuing dreams of fortune; the revolutionaries seeking an end to the Shogunate; and the youth of Japan eager to study the West. Today, over a century later, the memories of Glover's life in those days here remain, untouched, along with the homes of the merchants who lived in Nagasaki and loved the city. Take a stroll through the good old days.

1 2 3 4 5 6 7 8 9 10

# Look

So much to see, historic scenes brimming with romance



## 1 Former Mitsubishi No.2 Dock House

The "dock house" was once a facility where ship crews could rest while their ship was at shipyard for repairs. In this typical Western-style building constructed in 1896, eight pillars above and below the veranda provide support. Take a moment on this veranda to enjoy the amazing view of Nagasaki.



## 2 Front Gate Guardhouse of the Former Nagasaki Commercial College

From the Meiji period (1868-1912) to the early part of the Showa period (1926-1989), the state-run Nagasaki Commercial College was an important educational institution in the field of Japanese economics. This is the school's original guard house, which was moved here from its former location and restored. The guardhouse features a blend of Japanese and Western design, with modern ornamentation appearing alongside traditional paper screen doors.



## 3 Former Nagasaki District Court President's Official Residence

This was the official residence of the president of Nagasaki District Court, constructed in 1883 in Uwa-machi. It is Nagasaki's only surviving government building that was constructed in a Western style outside of the foreign settlement area. As such, it is a very valuable building. The interiors were designed by Japanese, and as well as board-lined Western-style rooms there is a living room with a tatami mat floor.



## 4 Former Walker House

The residence of British businessman Robert Neill Walker's second son, this house was built just next to the Oura Catholic Church in the middle of the Meiji era. Japanese taste is reflected in details such as the Japanese-style eaves protruding from the roof.



## 6 Former Alt Residence (A Nationally Designated Important Cultural Property)

The Former Alt Residence is the largest stone-built Western-style house remaining in Nagasaki. It was designed and constructed by Koyama Hide, who also worked on the Former Glover Residence and Oura Cathedral. The Former Alt Residence is a wonderfully ornate building, with a gable-roofed porch jutting out towards the harbor and a wide veranda supported by pillars made from Amakusa pottery stone.



## 8 Former "Jiyu-Tei" Restaurant

The Jiyu-Tei opened around the end of the Edo period in front of Irabayashi Shrine as Japan's first Western-style restaurant. The restaurant's founder, Jokichi Kusano, studied under one of Dejima's Dutch residents, where he was said to have perfected his cooking skills. Currently, the second floor is a coffee shop.



## 10 Nagasaki Traditional Performing Arts Museum

Here you'll find on display the white and red dragons from the dragon dance performed during the Nagasaki Kunchi Festival, as well as kasa-boko, the elegantly decorated umbrella-like objects used to guide the dances performed by each neighborhood, in addition to other exhibits. You'll also have a chance to watch videos of the Nagasaki Kunchi Festival.



## 5 Former Ringer House (A Nationally Designated Important Cultural Property)

A bungalow-style house encompassed by a veranda on three sides, built at the beginning of the Meiji era. The stone veranda floor is granite brought over from Vladivostok, while Amakusa stone was used for the pillars supporting the veranda roof. Wood and stone find harmony together in this remarkable wooden-framed stone building.



## 7 Former Steele Memorial School

This mission school was built in the hills of Higashi-Yamate in 1887. Its first floor has a photograph of the Glover family and "Glover encyclopedia" which is one of Japan's four major encyclopedias of fish. The second floor has an exhibition of Ken Tagawa's wood-block prints of the Western-style houses of Nagasaki.



## 9 Former Glover House (A Nationally Designated Important Cultural Property)

The oldest Western-style wooden building in Japan, built in 1863. The clover-shaped architecture, with no formal main entrance, brings to mind a bungalow from some southern country. Inside the house, a variety of artifacts are on display, including Glover's favorite walking stick, adorned with a sculpture of a dog, and portraits of Glover and his wife Tsuru.

Through shipbuilding, coal mining and the tea trade, Glover contributed greatly to the modernization of Japan. He is known as the father of Japanese beer, and the Kirin Beer logo shares Glover's famous moustache.

Born in Scotland, Glover came to Nagasaki in 1859 at the age of 21, when the ports of Japan were opened. In Nagasaki he established the Glover Trading Company. Glover was generous in his support of young people, and in the tumultuous final years of the Edo Shogunate, he secretly supported royalist revolutionaries and assisted in sending members of the Satsuma clan to study in Britain. After the Meiji Restoration, Glover was a business leader and made great contributions towards the introduction of modern technologies to Japan. Because of his brown eyes and red face, Glover earned the nickname 'Red Demon' from the workers in his coal mine. However Glover was bold and warmhearted, and showed great affection for his employees. He never forgot to buy souvenirs for his workers' children. Glover was also kind towards his family, and made a happy household together with his Japanese wife Tsuru. He lived a harmonious life in Japan until he passed away in 1911, aged 73. He is buried in Sakamoto International Cemetery along with Tsuru, their son Tomisaburo Kuraba and his wife.

Robert Neill Walker 1851~1941

Modernized Japan's shipping industry, cold drink pioneer.

Born in Britain, Walker established Walker & Co. in Nagasaki in 1898. He left an important legacy in the Japanese shipping industry and later established the first beverage manufacturer in Japan. He was active as one of the most influential men in the business world of the Nagasaki foreign settlement.

Walker loved Japan so much, he went so far as to name two of his beverages "Banzai Cider" and "Banzai Lemonade". In his later years, he moved to Canada, transferring control of his business and his home to his son Robert Walker, Jr. Two generations of Walkers lived in Nagasaki for over 70 years.

<Establishment of Kirin Beer's predecessor> Robert Neill Walker's older brother Wilson Walker founded the Japan Brewery Company with Glover. This company was the predecessor of the current Kirin Brewery Company, Ltd.

Yanosuke Iwasaki 1851~1908

The man who built up the Mitsubishi organization as the second president of Mitsubishi.

The younger brother of Mitsubishi founder Yataro Iwasaki, Yanosuke Iwasaki is the man building up the Mitsubishi organization second president of Mitsubishi. His older brother Yataro and Glover were deeply connected in Nagasaki. After Yataro's death, Yanosuke continued the friendship over the course of his own life, inviting Glover into Mitsubishi as a consultant. There still exists a photograph of Yanosuke Iwasaki and Glover together at the former Steele Memorial Academy.

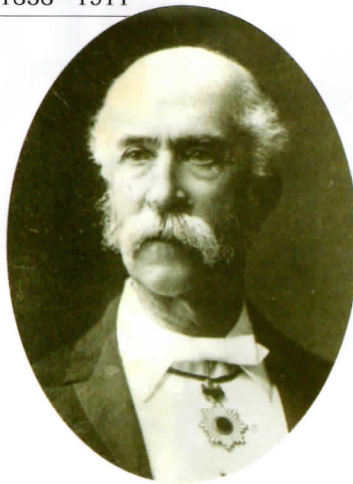
William Alt 1840~1905

Through his business, William Alt introduced the world to Japanese tea.

Born in Britain, William Alt came to Japan when the ports were opened. He soon moved to Nagasaki, where he established the Alt Trading Company. In partnership with the Nagasaki businesswoman Kei Oura, he bought up and exported tea from all around Kyushu. With the huge profits he made from the tea manufacturing industry, Alt had the Alt Residence constructed in 1865. Although it is a very Westernstyle building, it was in fact designed by Hide Koyama, who was also the architect of Oura Cathedral. In her memoirs, Alt's wife Elizabeth wrote: "Nagasaki is a truly beautiful place. I know of no place more beautiful."

<Alt's Business Partner, Kei Oura> Kei Oura was Alt's partner in the tea manufacturing and selling business. Kei was the daughter of Nagasaki's foremost oil trading family, but when she was aged 16 a huge fire destroyed her family's business and they fell upon hard times. However, she entered into the tea trade when she was 25, and managed to restore her family's fortunes. She is known as one of the three great women of Nagasaki.

Thomas Blake Glover



Thomas Albert Glover 1870~1945

First introduce trawling into Japan, produced the monumental epic the Glover Atlas and contributed to the modernization of Nagasaki as a fishery prefecture.

Thomas Blake Glover's son Tomisaburo Kuraba joined Holme, Ringer & Co., introduced stream trawlers and greatly contributed to promoting the fisheries industry in Japan. Seeing the enormous fish caught in trawl nets, Tomisaburo invested his own funds to complete the Glover Atlas, counted among the four great fish atlases of Japan. Born of mixed ancestry, Tomisaburo created a social group for foreigners, the Naigai Club, and poured his energy into establishing the Unzen Golf Course which is Japan's first public course.

Frederick Ringer  
1838~1907

Engaged in foreign trade throughout his life, reigned over Nagasaki's economic world in Meiji era.

Born in Britain, Ringer came to Japan in around 1864, working at Glover & Co. and then establishing Holme, Ringer & Co. in 1868 together with another Englishman, Holme. He established the Naigai Club for the local community to meet with residents of the foreign settlement and was active in a wide range of activities including construction of Nagasaki waterworks, international trade, agency, tea manufacture, milling, and electric power generation. The Nagasaki Hotel, which he built on Oura Kaigan Dori street (next to the former HSBC Nagasaki branch) in 1898, gained prominence as one of the top hotels in Asia at the time.

William Alt



Robert Neill Walker



Yanosuke Iwasaki



Contributing to Japanese Industry and Ushering in a New Era

The People of the Nagasaki Foreign Settlement

Tomisaburo Kuraba Frederick Ringer